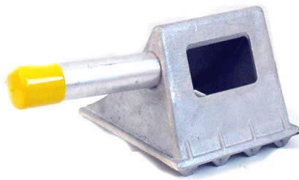


SPECTRUM CATALYST



Function **LWG-ASH** Salient Characteristics

Molded aluminum, small chock with aluminum handle and cap.

Tire Size Rating: BEST FIT: Common Commercial Tires (15R)
MAXIMUM DIAMETER: 17.5 Inches

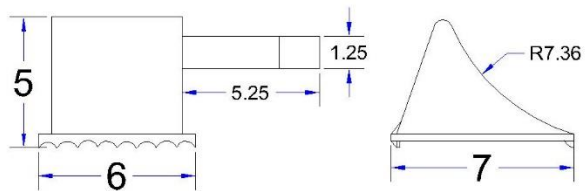
% Grade Rating: 9 % single chock usage,
18 % paired chock usage. ALWAYS USE IN PAIRS

Features: Molded Aluminum Construction features Teeth and Handle area
Flanged base allows for a full range of bracket options.
Solid Bottom
Grab Handle

Best Use: LIGHT TRUCKS and TRAILERS: Pickups and utility trailers.

Description

LWG-SBWH provides outstanding performance attributes. Design characteristics provide for enhanced coefficient: a heel-to-toe length that allows for a steeper line of force between axle and rear teeth. Long base facilitates dynamic protection.



Design

MATERIAL	Aluminum 810 - Permanent Molded
SIZE	5.25H x 6W x 7L inch
WEIGHT	2.0 lbs.
SCHEMA No.	1126002055
Origin	Manufactured USA
FEATURES	Individual gripping teeth / Grab Handle

WHEEL CHOCK PLACEMENT

- **WARNING:** Always use in pairs against the grade.
- Downhill facing vehicles, place in front of both front wheels.
- Uphill facing vehicles, place behind both rear wheels.
- On level grade, place (1) chock on either side of front or rear wheel.

WHEEL CHOCK GUIDELINES

- Set parking brake per vehicle instructions.
- Install chocks snugly against tire, square and center with tire tread.
- **WARNING:** Do not place hands or fingers between tire and chock.
- **DANGER:** Never try to chock a moving vehicle.